

EXCALIBUR

X120 HYDRAULIC CRAWLER EXCAVATOR

Precision-built for pros who demand more from their machines.



1300 039 225

18A TREFOREST DRIVE
CLAYTON VIC 3168
ABN 85 682 266 404

EXCALIBUR MACHINERY.COM.AU

EXCALIBUR

X120 HYDRAULIC CRAWLER EXCAVATOR

Great Performance, Compact in Size.

Kubota Engine, Retractable Crawler.



ROPS & TOPS Roll Bar – complying with ROPS & TOPS specifications.

Side levers for easy control, ergo wrist rest for better ops.



X120 HYDRAULIC CRAWLER EXCAVATOR

TECHNICAL SPECIFICATIONS

ENGINE



Model	Kubota/D782
Type	No.3 cylinders Direct injection
No. of cylinder	3
Bore and stroke	67mm×73.6mm
Displacement	0.788L
Power output	9.8kW/2300rpm

TRAVEL SYSTEM



Travel motors / Model	Danfoss/Eaton
Track roller qty	3X2
Carrier roller qty	No
Track shoes	40X2
Travel speed	2.0/3.5 km/h
Drawbar pulling force	
Grade ability	58%
Ground clearance	102

HYDRAULIC SYSTEM



Main Valve	Nobtesco
Pump	China
Type	Gear pump
Max. discharge flow	18.4 L/min

SWING SYSTEM



Swing motor	Danfoss/Eaton
Swing motor type	SW2.5K
Swing speed	11 r/min

DIGGING FORCE (ISO6015) (KN)



Boom length	1450mm
Arm length	890mm
Bucket digging force	10.4kN
Arm digging force	5.4kN

REFILLING CAPACITIES AND LUBRICATIONS



Fuel tank	10L
Cooling system	3.1L
Engine oil	3.8L
Hydraulic oil tank	16.3L
System Capacity	21L

BUCKET



Type	Standard
Bucket capacity	0.02m3
Bucket width	360mm

OPERATING WEIGHT AND GROUND PRESSURE



Shoe width	180mm
Ground pressure	29kPa
Operating weight	1200kg

X120

X120 HYDRAULIC CRAWLER EXCAVATOR



TECHNICAL SPECIFICATIONS (CONTINUED)

SCOPE OF WORK (MM)



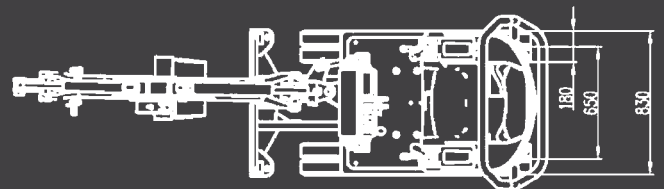
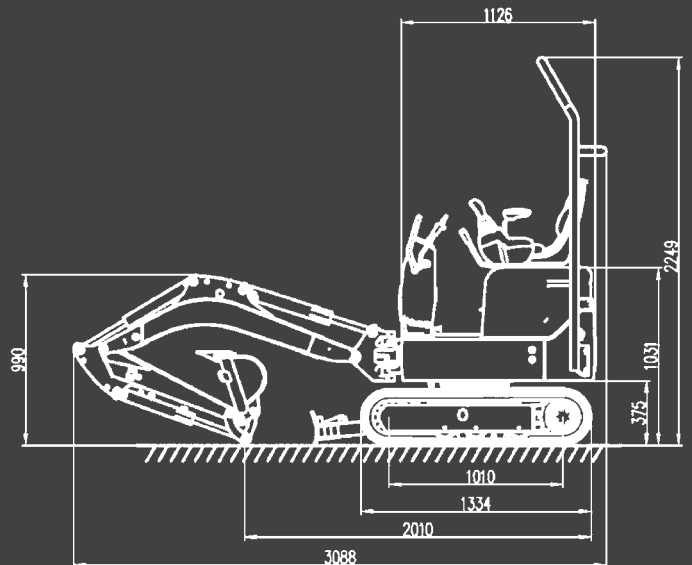
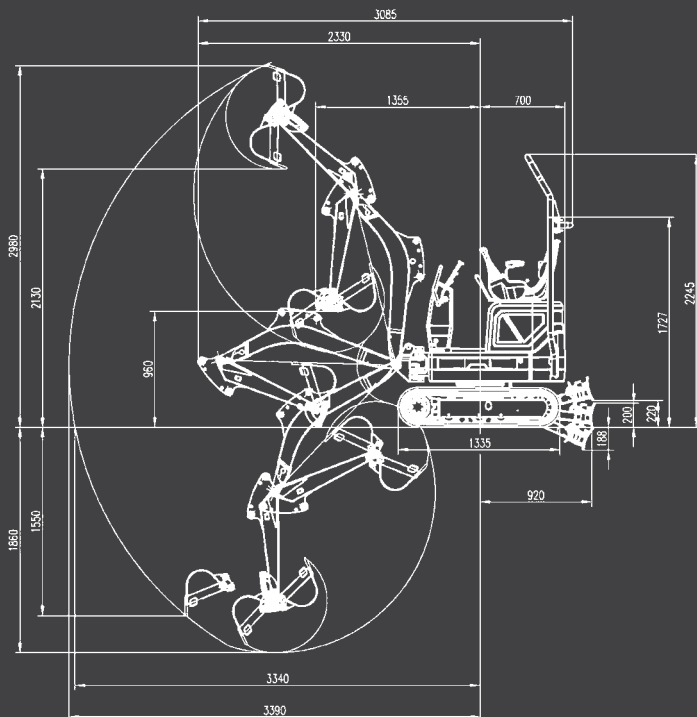
A	Max. digging height	3017
B	Max. dumping height	2147
C	Max. digging depth	1837
D	Max. vertical digging depth	1580
E	Max digging radius	3360
F	Max. digging radius at ground level	3310
G	Min turning radius of working device	1330
H	Blade Max. lifting height	240
I	Blade Max. depth of cutting	150

SIZE DIMENSIONS (MM)

Arm Length 890mm



A	Overall length	3025
B	Ground contact length (Transportation)	1835
C	Overall height (to top of boom)	967
D	Overall width	830/1000
E	Overall height (to top of cab)	2260
F	Counter weight ground clearance	393
G	Ground clearance	108
H	Tail swing radius	700
I	Crawler wheel base	1010
J	Track length	1335
K	Track gauge	650/820
L	Track width	830/1000
Q	Bucket width	360



DISCLAIMER: Specifications, features, and availability may vary by model and are subject to change without notice. Images are for illustrative purposes only. Actual product may differ. Performance may vary depending on application, conditions, and operator skill. Always operate machinery in accordance with safety guidelines and local regulations.

1300 039 225

18A TREFOREST DRIVE, CLAYTON VIC 3168

ABN 85 682 266 404

EXCALIBUR MACHINERY.COM.AU